

The National Membership Organisation for Energy Assessors



We are the Professional Body representing you nationally and a primary source for much of your mandatory CPD requirement.
We are Energy Assessors supporting Energy Assessors.

In this issue

How much CPD do you need to pay for?
Professional bodies win recompense for DEC Assessors
EPC Reform Consultation
Retrofit Design Guidance Update
Site Visit Requirements for Retrofit Coordinators
Big hole in the Government's industrial strategy
What is the VALUE of Proficiency?
All I want for Christmas is....
Proficiency welcomes new industry partner
Would you like more clients?

How much CPD do you need to pay for?

All of the upcoming events listed below are included in a single low cost annual membership so please do take full advantage of them.

All our CPD meets the enhanced requirement for the 50% of your CPD that must be certificated attendance. However, there is nothing to stop you achieving 100% of your requirement with these regular bite-size online CPD events.

In 2024, the CPD sessions we have provided, fully included in the membership, total 42 hours. Even if a few aren't convenient to get to, or don't suit your particular strand(s), that pretty much has you covered.

So in answer to the question "How much CPD do you need to pay for"?
Once you are a Proficiency member - none.

(We are not suggesting that you shouldn't do other paid for CPD if you like the look of it. We are simply saying that with a Proficiency membership your mandatory requirement is easily taken care of).

Upcoming CPD

5th Feb 2025

Decarbonising Commercial Buildings



Driving Operational Efficiency and Carbon Savings

How machine learning can help optimise energy consumption and automate demand response benefits for commercial properties.

Bridging the gap between energy assessors and facilities management.

[Book Now](#)

18th Feb 2025

RdSAP 10



As the go-live date for RdSAP10 finally approaches (hopefully), we have a run through of the software.

Find out what is changing and how it will affect your data collection requirements.

There will be an opportunity to ask questions on anything that doesn't seem clear.

[Book Now](#)

11th Feb 2025

Really Useful Stuff



A Tips and Tricks session helping you to work smarter, not harder

Proficiency Chairman Ian Sturt will take you through a wide range of topics that will increase your productivity

Find out about web resources that could be useful, software that can make you more efficient, and how to improve your internet marketing.

[Book Now](#)

19th March 2025

Non-domestic Conventions Q&A



This session is repeated periodically due to popular demand.

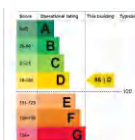
This is an opportunity to ask about any of the conventions you are not clear on.

Gain a better understanding of the non-domestic EPC conventions and how to apply them

[Book Now](#)

Relevant News

Professional bodies win recompense for DEC Assessors



Earlier in the year, DLUHC (now MHCLG) supplied an update containing defective weather data to DEC Assessors.

Providing DEC Assessors with a defective CIP file resulted in a significant number of incorrect DECAs being lodged. Once the error was identified, a corrected weather data update was issued, and DEC assessors were instructed to replace all the DECAs on a list provided by MHCLG.

That in itself was sensible, but Proficiency pointed out to MHCLG that it was unreasonable for MHCLG to expect DEC Assessors to do the work needed for nothing. We are pretty confident the staff at MHCLG would not work several hours for nothing to fix a problem of our making, so why should DEC Assessors work for nothing to fix their problem.

It has taken a while, but (with the assistance of PEPA) we have ensured that DEC Assessors will be compensated for the time spent reloading the DECAs that were incorrect because the weather data was defective.

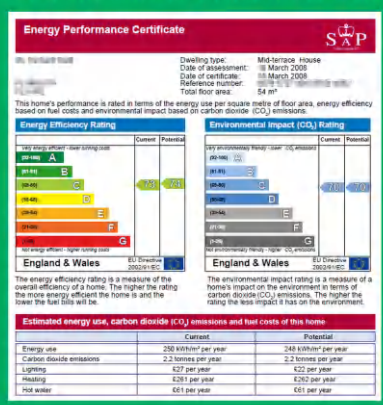
[Read the article](#)

EPC Reform Consultation

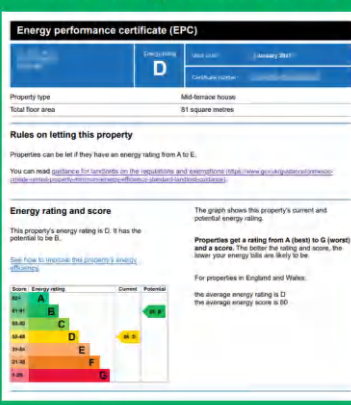
Many people learn from their mistakes, but wise people learn from other people's mistakes.

We are too far down the road for policy makers to have the luxury of making more mistakes to learn from. They need to get wise now.

This is how informative the EPC was in 2008.



This is what they dumbed it down to



Then the government took advice from "experts" outside the energy assessment profession

Proficiency
Professionals in efficiency

EPC Reform isn't rocket science - give us back what you took away - useful display of cost and carbon

The long awaited consultation into "Reforms to the Energy Performance of Buildings regime" is now open. It is often referred to as the EPC Reform Consultation, but the scope is much wider than just EPCs.

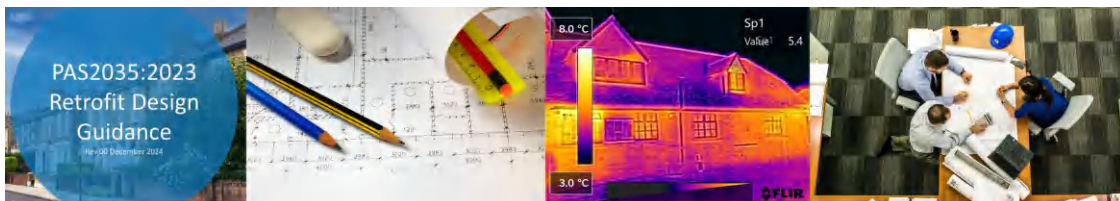
There is a massive amount of valuable experience to draw on. Now is the time for Energy Assessors to speak up on what works and what doesn't. It is time for the voices of experience from working with the tools we currently have, to be heard louder than the voices of the vested interest organisations.

Find out more about what you can do, and how you can contribute to the consultation.

[More about the EPC Reform Consultation](#)

Retrofit Design Guidance Update

New guidance to assist in the preparation of retrofit designs and supporting documentation.



For those working in retrofit design, understanding the latest advice and guidance is critical to delivering projects that meet modern standards of efficiency, safety, and responsibility.

PAS2035 2023 is coming and everyone involved needs to be fully prepared. The newly released advice and guidance for Retrofit Designers is now available on the Proficiency website.

[Retrofit Design Guidance](#)

Site Visit Requirements for Retrofit Coordinators

TrustMark has released updated guidance on site visit requirements.



Site visits will be mandatory for all PAS 2035:2023 projects involving the installation of most types of insulation.

The updated guidance aims to provide clarity on site visit expectations and reinforce the critical role of Retrofit Coordinators in ensuring compliance and quality.

[More about the site visit guidance](#)

Big hole in the Government's industrial strategy

There is something pretty significant that seems completely overlooked in the Government's industrial strategy.



Certainly there is a need to secure the foundations of the UK economy, but we question whether growth alone is the answer. Doing as much with less resources can be as beneficial as doing more if doing more is going to require more resources.

We need to ensure that the only energy we are using is energy that needs to be used; so energy efficiency needs to be part of the strategy.

[More about the hole in the industrial strategy](#)

What is the VALUE of Proficiency?

A question we often get asked, and the answer is very much dependent on your definition of "Value".



The word "Proficiency" has its own meaning as possessing great skill, ability, and experience. It is also a combination of the word "Professional" and the word "Efficiency". That is who we are; the Professional Body for Professionals in Efficiency.

Proficiency is the trade organisation (Professional Body) that represents Energy Assessors and Associated Professionals in the United Kingdom.

Its primary purpose is to provide assistance and a single voice for Energy Assessors, Retrofit Assessors and Coordinators, and Energy Efficiency Specialists. These are professionals critical to effective delivery of the UK's sustainability efforts.

[More about the Value of Proficiency](#)

All I want for Christmas is...

Do you still have someone who is asking you what you want for Christmas?



Tell them you want....

- Next year's CPD already covered
- A year of web advertising
- Discounts with several industry organisations
- Access to support and guidance for a whole year
- To feel part of something important
- The key to 2025 being your most successful year yet

Tell them you want a Proficiency membership

Proficiency membership is a gift worth giving

Additional partner benefit added



There were already a host of benefits to a Proficiency membership, but we have recently added another one.

Register as an epIMS member and you can give your clients an additional preliminary report providing more detail about the property and the options on the EPC, enhancing your service.

As a Proficiency member, you are also entitled to a number of Premium reports that you can sell to your clients as an add-on service and additional revenue stream.

Benefits of working with epIMS

This is in addition to existing member benefits with other industry partners including:

DesignBuilder
Elmhurst Energy
EPC Near Me
Merlin Lazer
Metropix
Quidos
zPlan

Membership Benefits

Would you like more clients?

Proficiency membership also includes website advertising on a directory specifically designed to attract LOCAL enquiries.

The directory is filterable by type of assessment needed, and will always list the closest member first. Make it easy for potential clients to find you by getting on the directory.

Enhance your credibility through being seen to be a member of your industry's Professional Body.

Premium members also gain from an enhanced listing with a direct link to their own fully customisable profile page, a mini website of their own.

[View the directory search](#)

Proficiency
Professionals in efficiency

The National Professional Body for Energy Assessors

Find a member Near You

www.proficiency.services

Your CPD Record

CPD Certificates for members are stored on the website

They can be re-downloaded at any time and the website keeps a running total of your hours.

You can filter the list and see your total hours for a custom period. It is simple to check your progress against your annual requirement, and it takes minutes to sort the evidence if you are called for an audit of your CPD record.

[Show me the Previous CPD list](#)



Proficiency is your Professional Body

The Proficiency Development Group are working towards creating a leadership team to take your professional body forward and ensure you are well represented in the changing market. We believe it is essential that Energy Assessors have the support and protection of a National Body that is run by its members, for the benefit of its members.

Should you be part of the leadership team?

The potential is there for you to be more than just a Proficiency member; you simply need to actively engage and demonstrate why you should be selected for the board.

If you care about what happens to energy assessment over the coming years, if you could do a better job of writing conventions, if you are capable of speaking up for your fellow energy assessors...

...now is your opportunity to make a difference by becoming part of the team that is ensuring Energy Assessors get the effective voice they so desperately need.

Do you want to make a difference?

**Only full (Premium) members are eligible to be selected for official representation and leadership roles. If you are only a Standard member you will need to upgrade your membership to become eligible. That is easily done in the "My Membership" section of the website.*

[FIND OUT MORE](#)

Professional energy assessors join Proficiency.

The most Professional should lead Proficiency.

The national membership organisation supporting and representing professionals in energy efficiency.

[Reminder of what Proficiency is about](#)

[Contact us](#)



[Unsubscribe](#)